

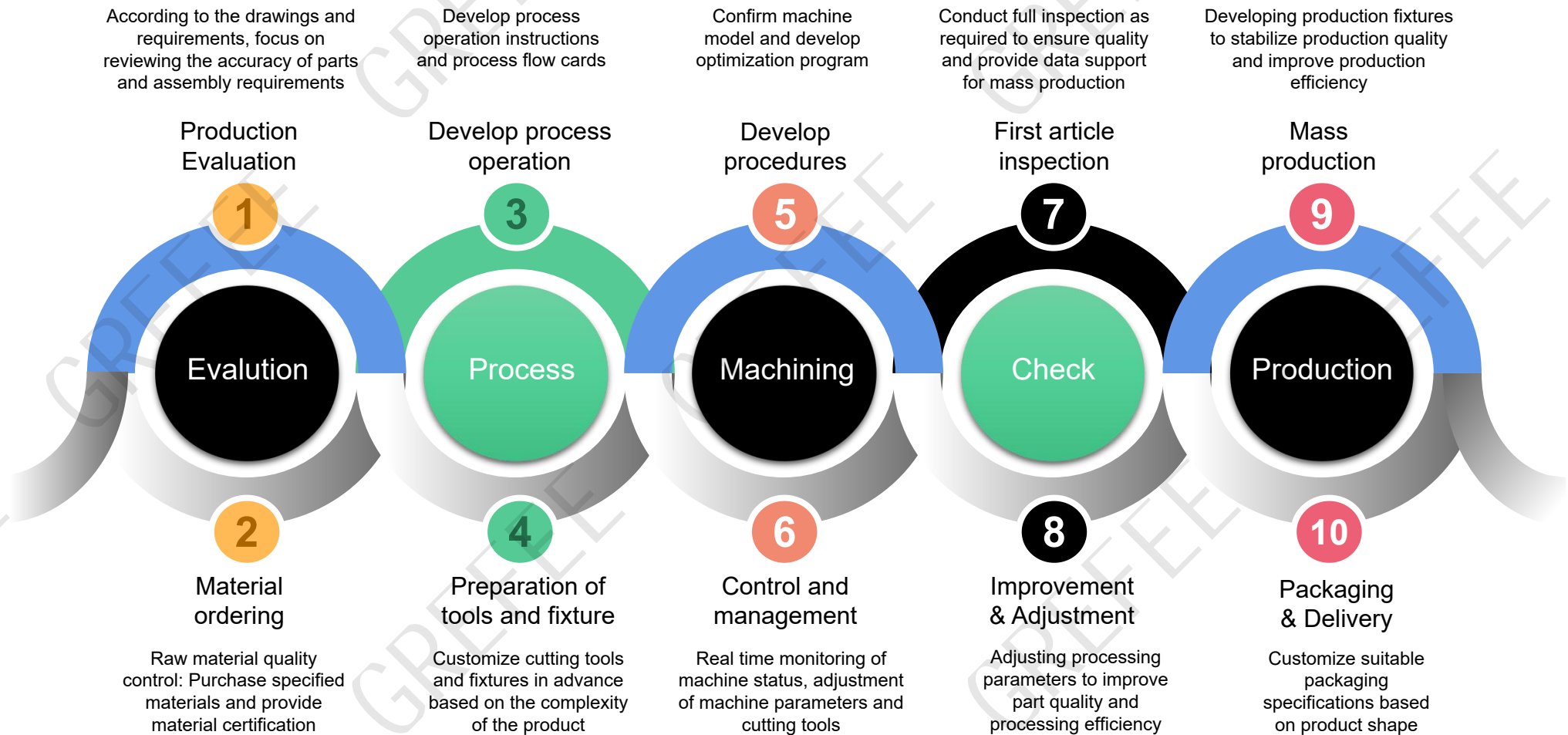


# Project Management CNC

Precision Defines Elevation

# Parts-CNC Machining Management

No MOQ, Whether it's sampling or mass production, strictly follow the production process, and complete on time with high efficiency, high quality, and high requirements



High efficiency

High Quality

Flexible

Consistency

Repeatable

Multi-functional



# Production Evaluation & Process Regulation



## Production evaluation

Evaluate product design and develop manufacturing processes  
Based on the functions and requirements of the product, the parts are sorted in detail for production. The detailed requirements include tool specifications, parameter requirements, tool paths, etc



Intelligent tool management

## Process regulation

Real time monitoring of machine status, adjustment of machine parameters and cutting tools to ensure machining quality and efficiency



Fully automatic drilling and tapping integrated processing





# Check & Post-Treatment

As the core department of parts processing, the QC department participates in the process management throughout the entire process, from the receipt of the order to the shipment of the goods. All products must be certified as qualified by the QC department before they can proceed to the next working procedure

## CHECK



## IPQC real-time full inspection ensures every production process

After the processing is completed, inspect and trim the parts by using measuring tools and equipment, including dimensions, flatness, surface finish, etc., to eliminate any possible defects caused by the processing and improve the precision and surface quality of the parts

## POST-TREATMENT

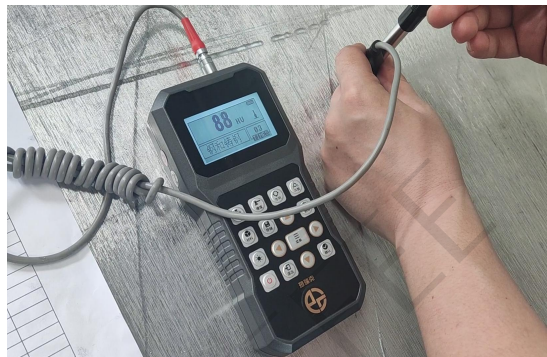


## Core dimension checking after surface treatment

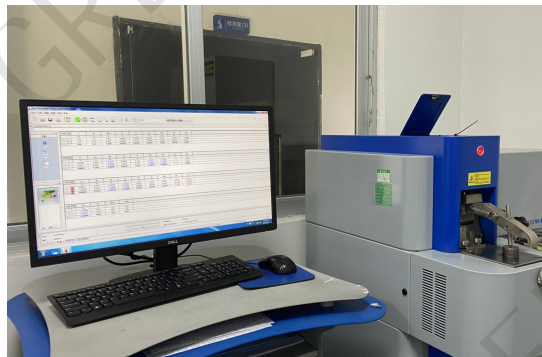
For the parts that require subsequent processing techniques such as grinding, polishing, and sandblasting, etc., the parts should be placed in a clean turnover blister box for internal transfer to ensure the quality of the parts



GREFEE controls every detail from material to shipment, including material hardness testing, material composition analysis, first piece inspection, and final quality control. We have comprehensive testing equipment to meet various testing needs



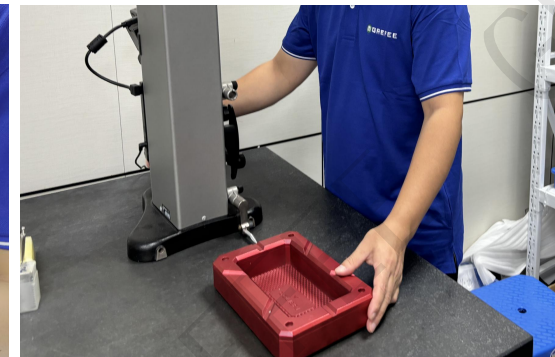
1: Raw material size and hardness testing



2: Raw material composition analysis



3: Full-size inspection of products



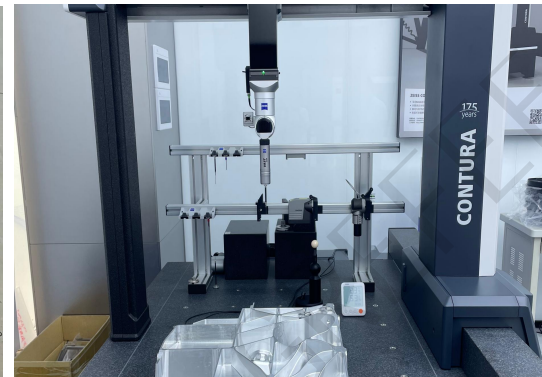
4: Re-inspect products after surface treatment



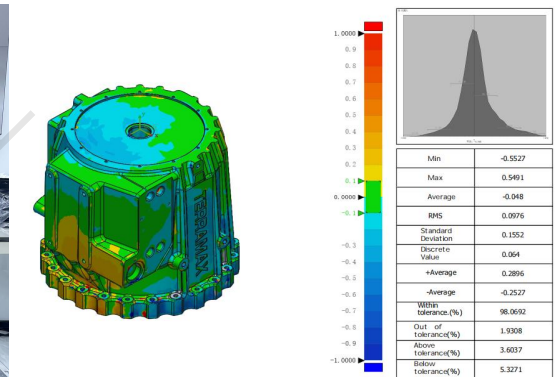
5: All threads go through gauge inspection



6: Scanning reports are provided



7: Zeiss CMM inspection



8: Provide the required inspection reports



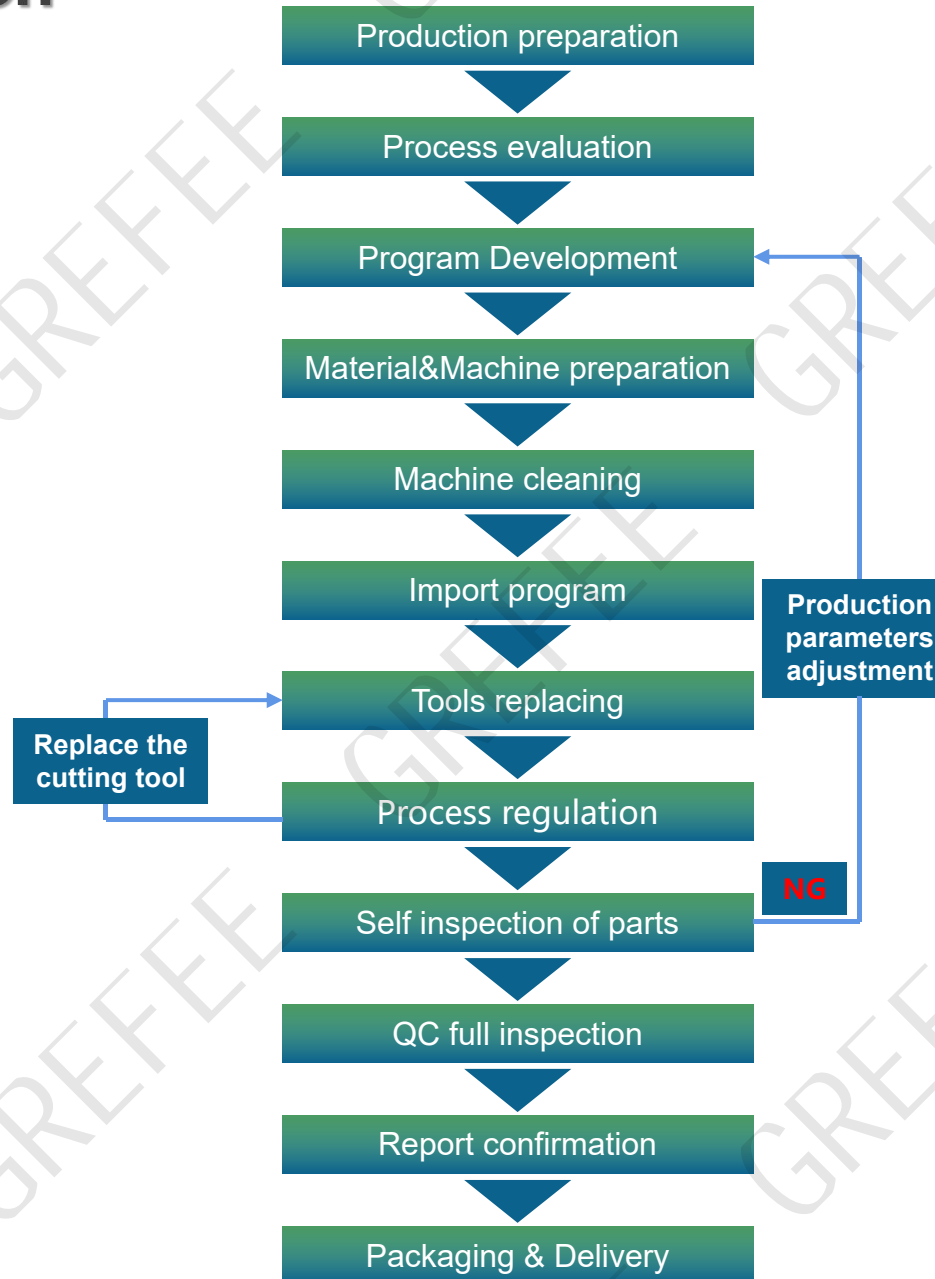
# Single Production



Rapid material preparation of all specifications, rapid production



Appearance, core dimensions, production self inspection

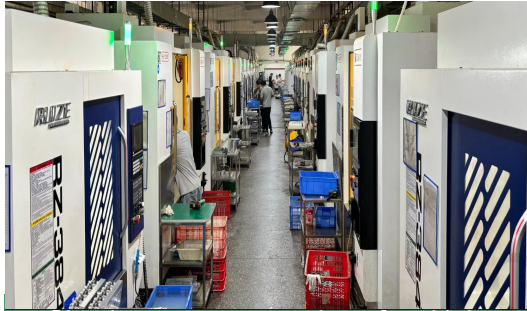


Machines, fixtures, and cutting tools have completed testing and are ready for production



Confirmation of Full Dimensional Inspection Report

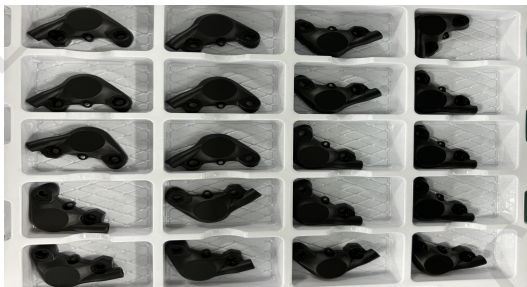
# Mass Production



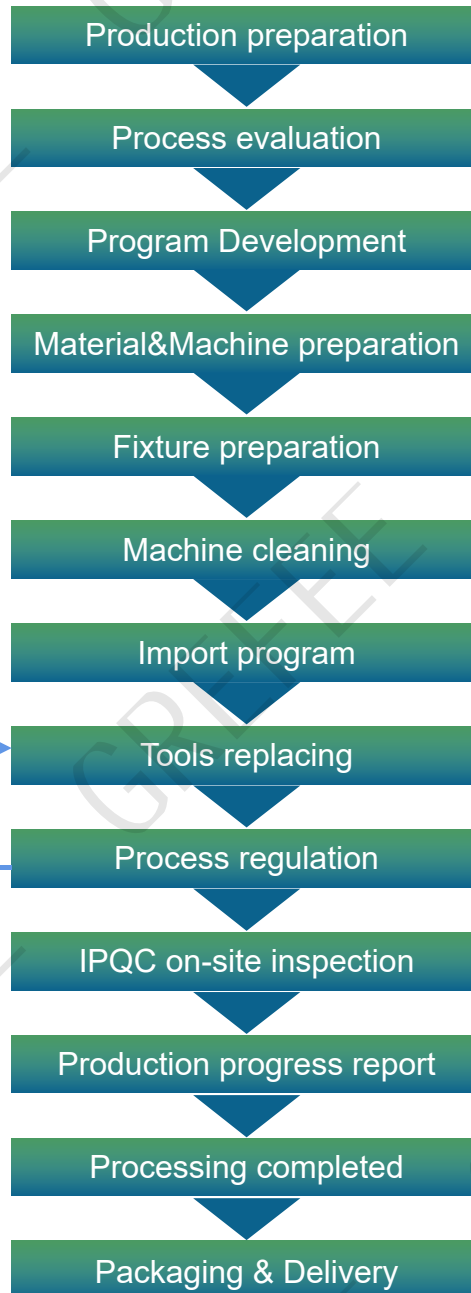
Simultaneous processing of multiple machines ensures high efficiency

班别: □A班 □B班 物料编号 版本 工序名称 机台号 作业员 检验员 组长确认									
2024.11.6									
序号	检验项目	检测工具	合格品数量	不合格品数量	合格品数量	不合格品数量	合格品数量	不合格品数量	合格品数量
1	0.2.6±0.02	千分尺	OK	OK	OK	OK	OK	OK	OK
2	0.2.7±0.02	千分尺	OK	OK	OK	OK	OK	OK	OK
3	0.2.6±0.02	千分尺	OK	OK	OK	OK	OK	OK	OK
4	0.2.6±0.02	千分尺	OK	OK	OK	OK	OK	OK	OK
5	0.1.4±0.02	千分尺	OK	OK	OK	OK	OK	OK	OK
6	0.65±0.03	卡尺	9.66	9.65	9.65	9.66	9.66	9.66	9.66
7	3.7±0.03	卡尺	3.71	3.70	3.70	3.71	3.71	3.71	3.71
8	1.1±0.03	卡尺	1.13	1.11	1.11	1.12	1.13	1.13	1.13
9	5.5±0.05	卡尺	5.51	5.52	5.51	5.52	5.51	5.51	5.51

Daily initial inspection, patrol inspection, and final inspection reports



Assembly of semi-finished parts vacuum forming box transportation



Replace the cutting tool

Production parameters adjustment

NG

Post treatment and other processes



Mass production of fixtures



Packaging & Delivery